

#1

Dresses may not be cut below the bust line. The bust continues around your sides directly under the armpit. With arms down at your side, if flesh touches flesh below the bust line, the dress is inappropriate.

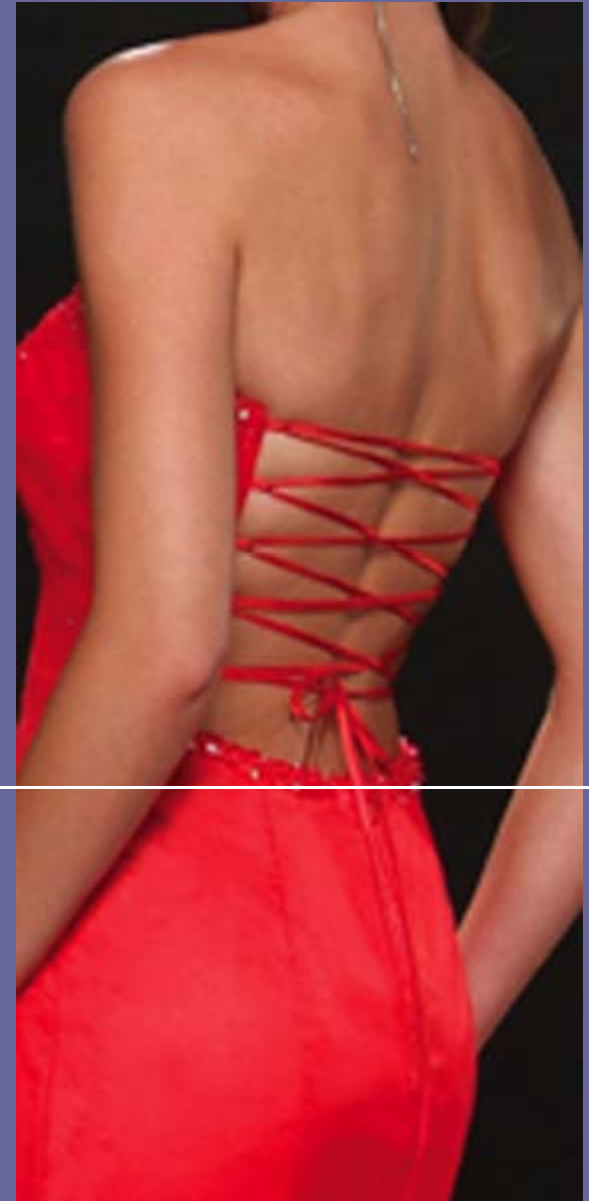


UNACCEPTABLE DRESSES



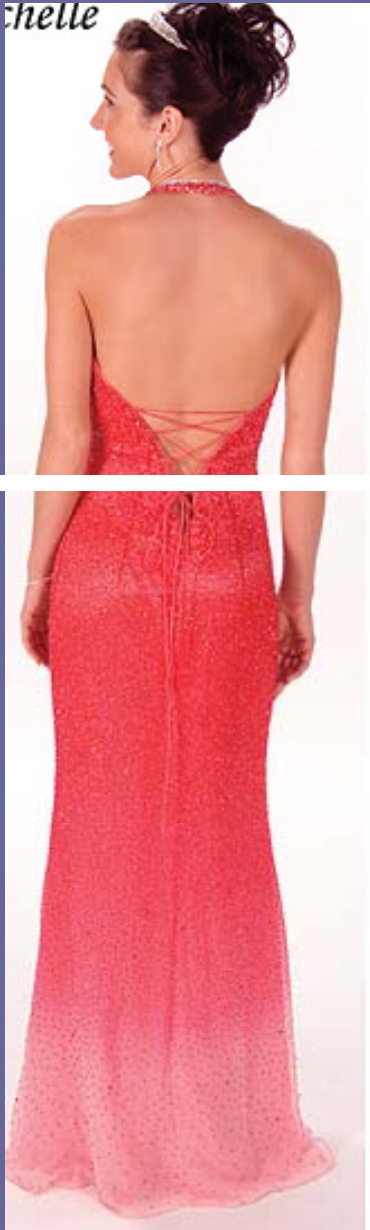
#2

Dresses may be backless as long as they are not cut below the naval.



This dress meets dress code. Please notice how the bust is covered on the sides.

UNACCEPTABLE DRESSES



#3

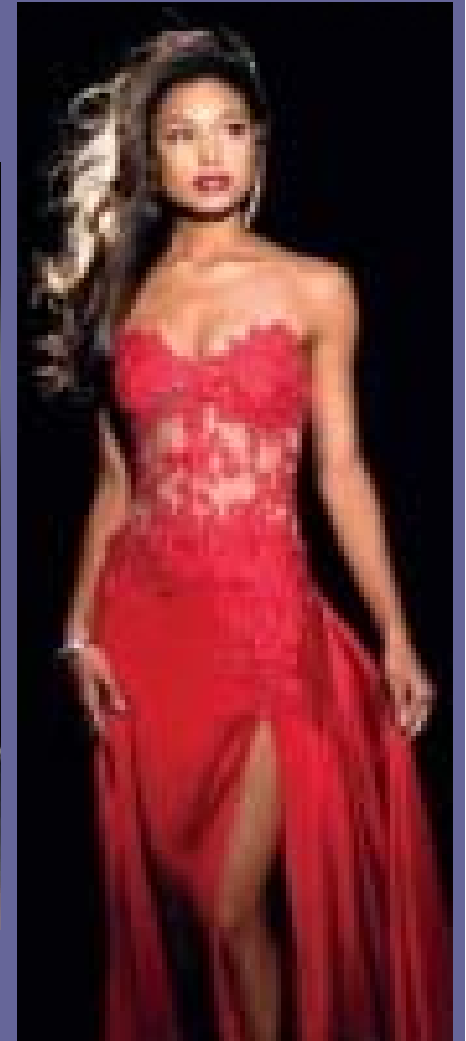
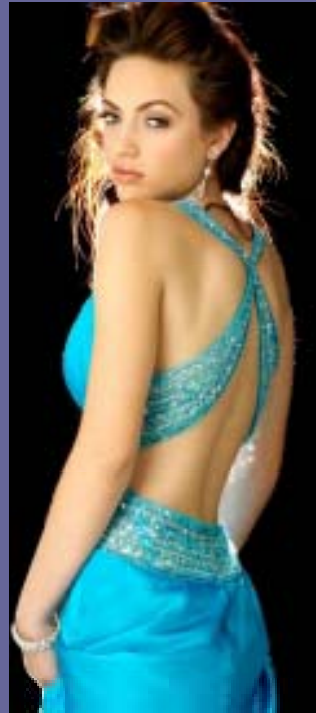
Midriffs will not be exposed.
This includes both front and side.
With arms down at your side, if flesh touches flesh in the midriff section the dress is inappropriate.

This dress meets dress code.



Midriff section

UNACCEPTABLE DRESSES



#4

Dresses may not have a slit that exceeds mid-thigh. This is fingertip length.

This dress meets dress code.



UNACCEPTABLE DRESSES



Pinning and Fabric Inserts

- No pinning will be allowed as an alteration for a dress if without the pins the dress does not meet dress code.
- Fabric inserts must be sewn, not pinned, on the dress if without the inserts the dress does not meet dress code.
- No cover-ups (coats, shawls, sweaters) will be allowed over dresses that do not meet dress code.

Pictures

Dress for pictures taken at the dance must also meet dress code. You may not wear an inappropriate dress to take pictures and then change into one that does meet code for the dance.

While we will be reasonable in our interpretation of these guidelines, we want you to know that you will not be allowed into the dance if you are dressed inappropriately.

Most importantly, this dress code does not limit your ability to show your style and uniqueness.

There are many beautiful and stylish dresses that do meet dress code.



8125

